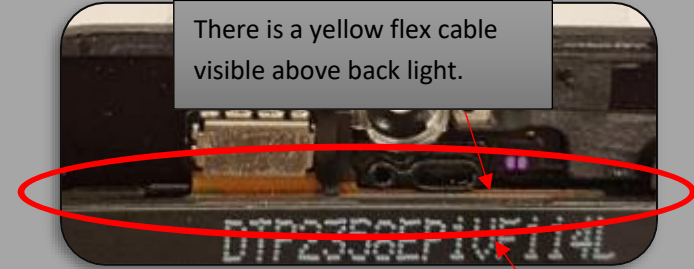
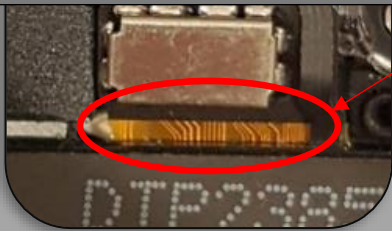


Comp. 5 Series

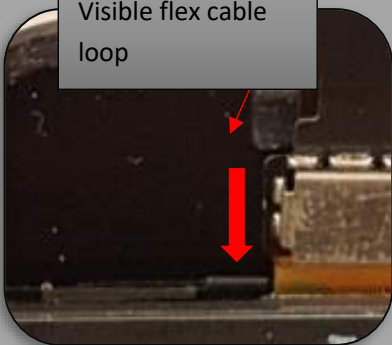
There is a yellow flex cable visible above back light.



Different circuit design than OEM, circuit will look different than OEM

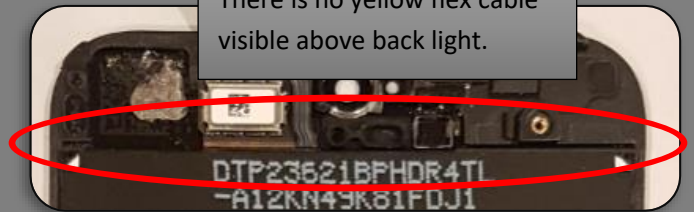


Visible flex cable loop

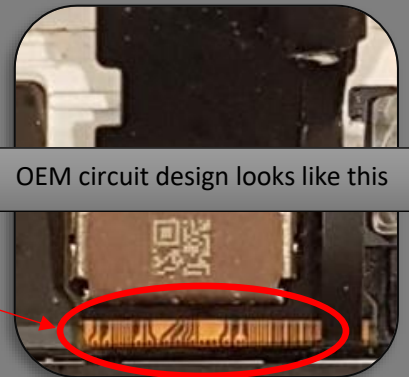


OEM 5 Series

There is no yellow flex cable visible above back light.



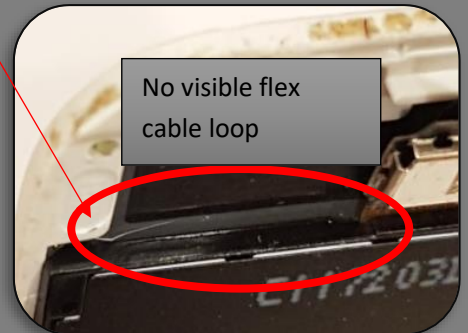
OEM circuit design looks like this



same circuit design as above but looks darker

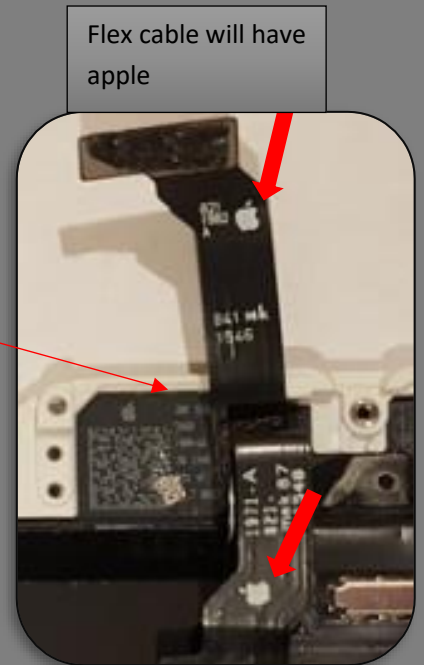
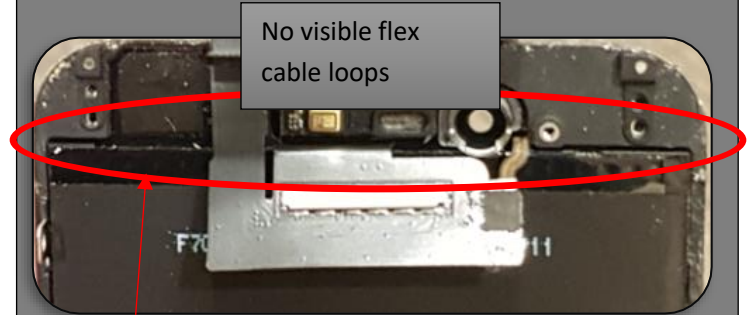
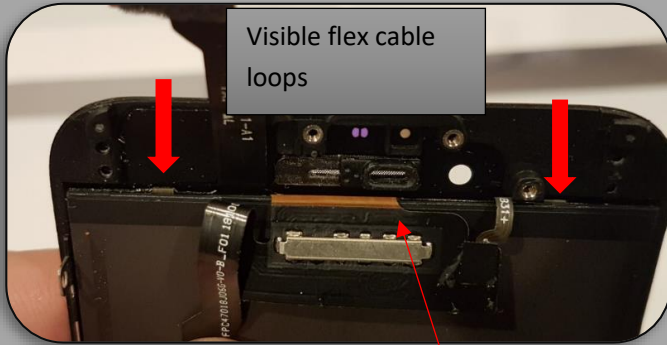


No visible flex cable loop

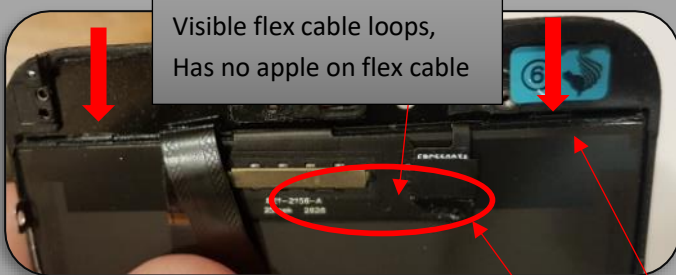


Comp. 6

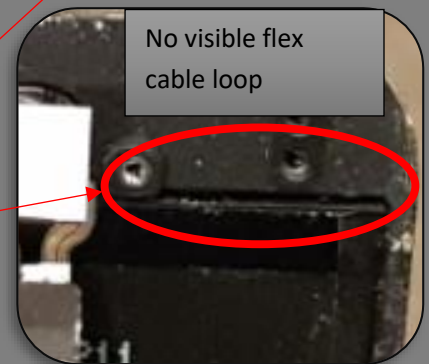
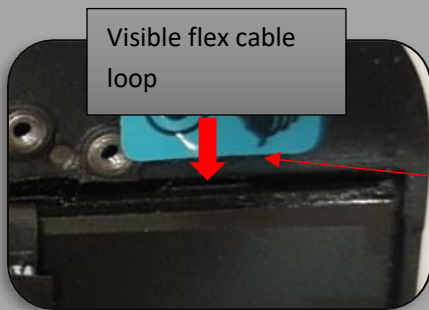
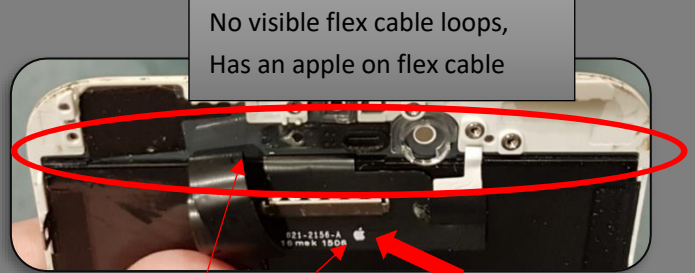
OEM 6



Comp. 6P



OEM 6P



Comp. 6S

flex cable will have
no apple

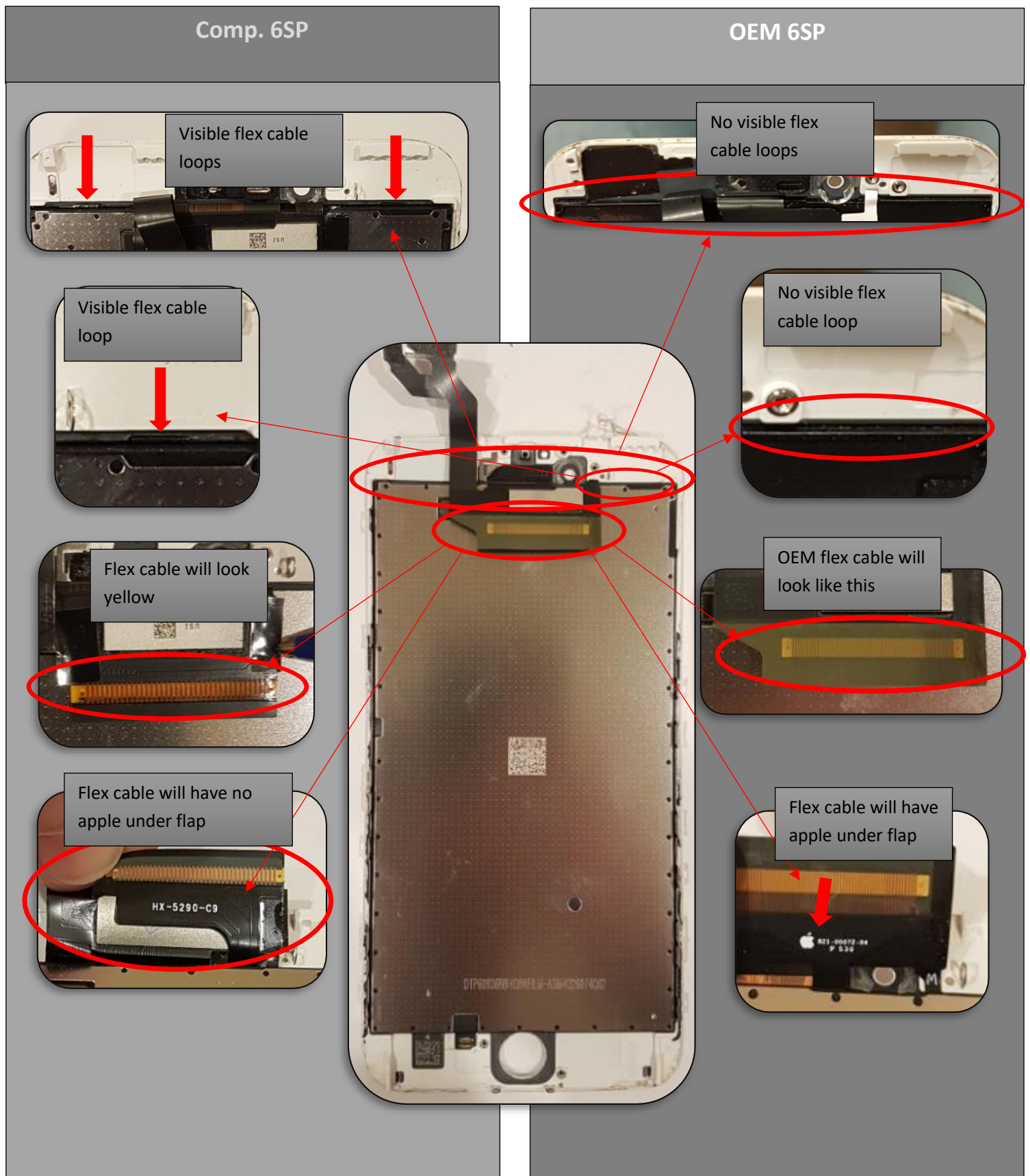
Flex cable will look
yellow

OEM 6S

Part of the apple
will be visible from
under tape

OEM flex cable will
look like this





Comp. 7

Different shape than OEM and flex cable is lighter over the edge of LCD

Flex cable is Yellow can be covered with tape

Visible flex cable loop

No apple

OEM 7

OEM flex will be this shape and will be all black

Flex cable is Black

No visible flex cable loop

Has apple



Comp. 8

Different shape than OEM and flex cable is lighter over the edge of LCD

Visible flex cable loop

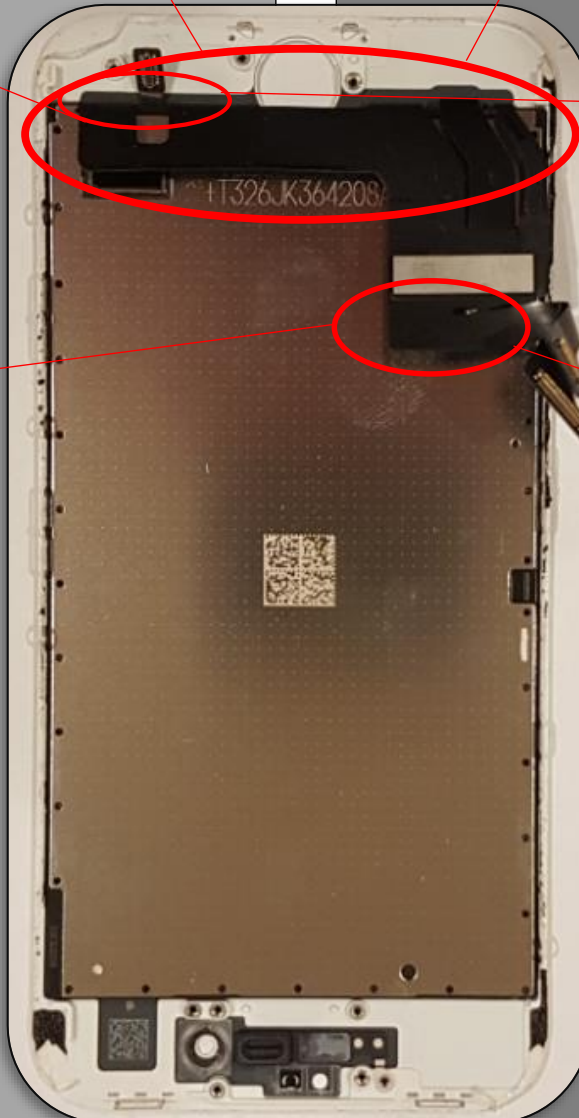
No apple under flex cable

OEM 8

OEM flex will be this shape and will be all black

No visible flex cable loop

Apple under flex cable



LCD BUYER // Comp.(Compatible) Vs OEM // Apple



LCD BUYER // Comp.(Compatible) Vs OEM // Apple

